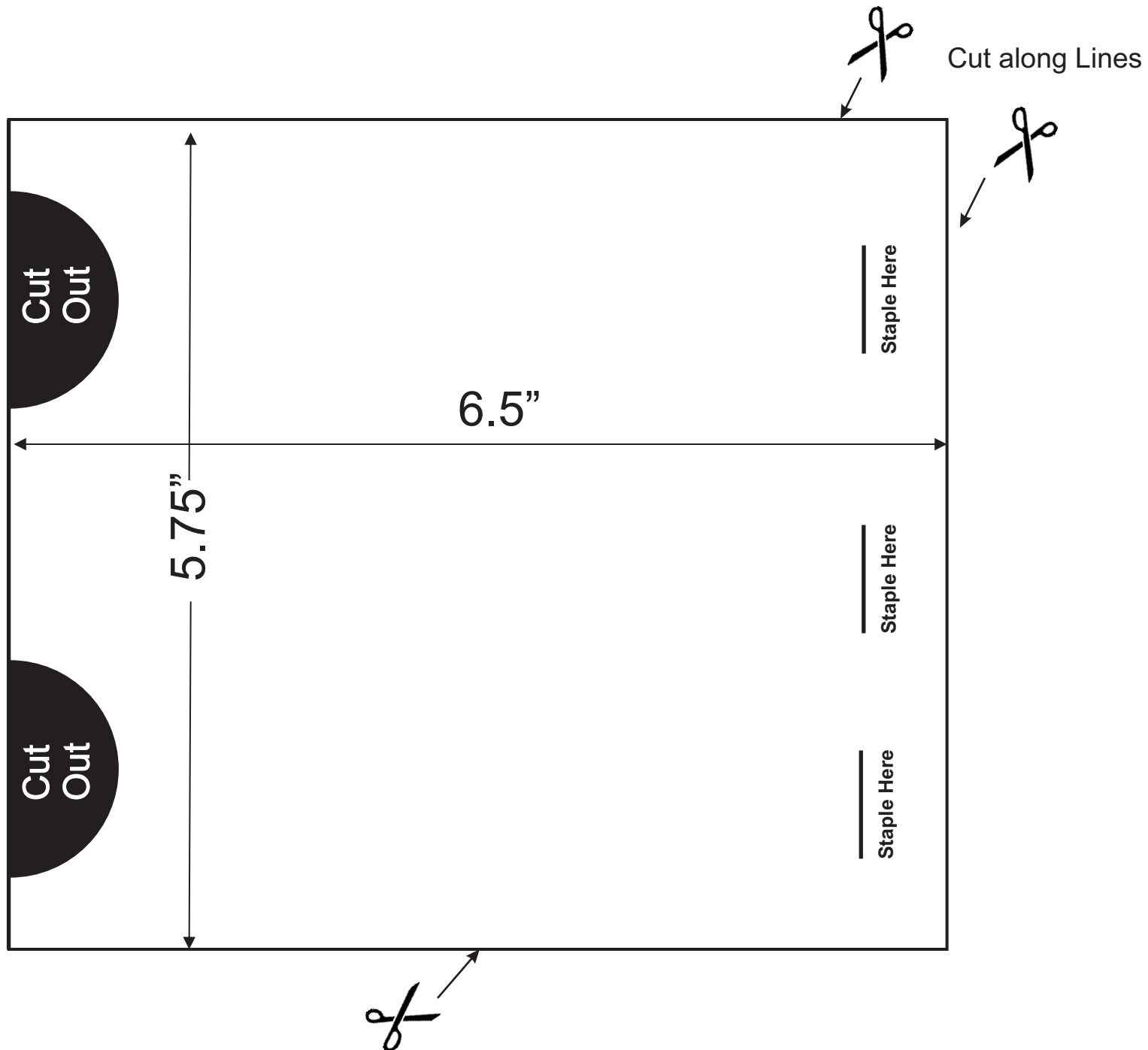


LETTER SIZE TEMPLATE FOR INSERTING BFE95 MATERIAL INTO YOUR MASK



This template should be printed on 8.5" x 11" Letter size paper

**Print this page out twice, you will need two of these.
You may want to trace this onto a piece of thin cardboard**

Print out TWO of the templates on the previous page.

These instructions are used if you cut out TWO templates halves on letter size paper.

Inserting the BFE95 material into your mask can be challenging because the material is thin and delicate.

This sheet is a template, which can be used to make a simple process of inserting your BFE95 material into your mask.

Prepare the Template:

- Cut out the template to make two rectangles, which are 5 3/4" by 6 1/2".
- Staple the two templates together at the edge opposite the circles, to make one piece
- Cut out the half circles shown in black

Insert the BFE95 material into the cotton mask

- Take the BFE95 material and cut it into a 5 1/2" x 5 1/2" square
- Place the sheet of BFE95 material in between the two layers of the folded template. The stiffness of the template will help insert the BFE95 material evenly into the mask.
- Insert the "sandwich" of the template and filter material all the way into the mask

Removing the template from inside the Mask

- Once the template and filter material have been inserted into the mask do the following: On the outside of the mask, place two fingers on the cutouts to hold the BFE95 in place and then pull out the template. The BFE95 material will stay in the mask.
- You may need to adjust the filter material slightly inside the mask.
- Your mask is ready to wear.
- For best results, the filter material should be changed daily.